



 @Critical Path Institute (C-Path)

 @Critical Path Institute

 @CPathInstitute

## STEP 1

Start with some key messages or share your own:

Are you a **SPEAKER** at a relevant event? Is it **NURSES WEEK**? Here are some additional ideas on how you can spotlight your participation and show your INC pride:

@CriticalPathInstitute's International Neonatal Consortium accelerates the development of safe and effective therapies for premies by engaging the global community, including **Nurses**. Find out more about how INC spurs collaboration to address neonatal needs: <https://c-path.org/inc/>

@CriticalPathInstitute's International Neonatal Consortium helps NICU nurses support long-term follow-up that balances direct and indirect family costs against sponsor benefits. Find out more about how INC spurs collaboration to address neonatal needs, go to: <https://c-path.org/inc/>

Drug effects or interventions in neonatal care may not be evident for many years, which is why there are important benefits to long-term follow-up. Find out more about how @CriticalPathInstitute's International Neonatal Consortium helps nurses address neonatal needs, go to: <https://c-path.org/inc/>

I'm proud to be speaking at <event name> this year and plan to highlight the important role @CriticalPathInstitute's International Neonatal Consortium plays in neonatal long-term outcomes. Learn more: <https://c-path.org/inc/>

It's National Nurses week and I salute my fellow NICU Nurses and co-members of the @CriticalPathInstitute's International Neonatal Consortium. Learn more about how NICU nurses are helping to accelerate drug development for neonates. <https://c-path.org/inc/>

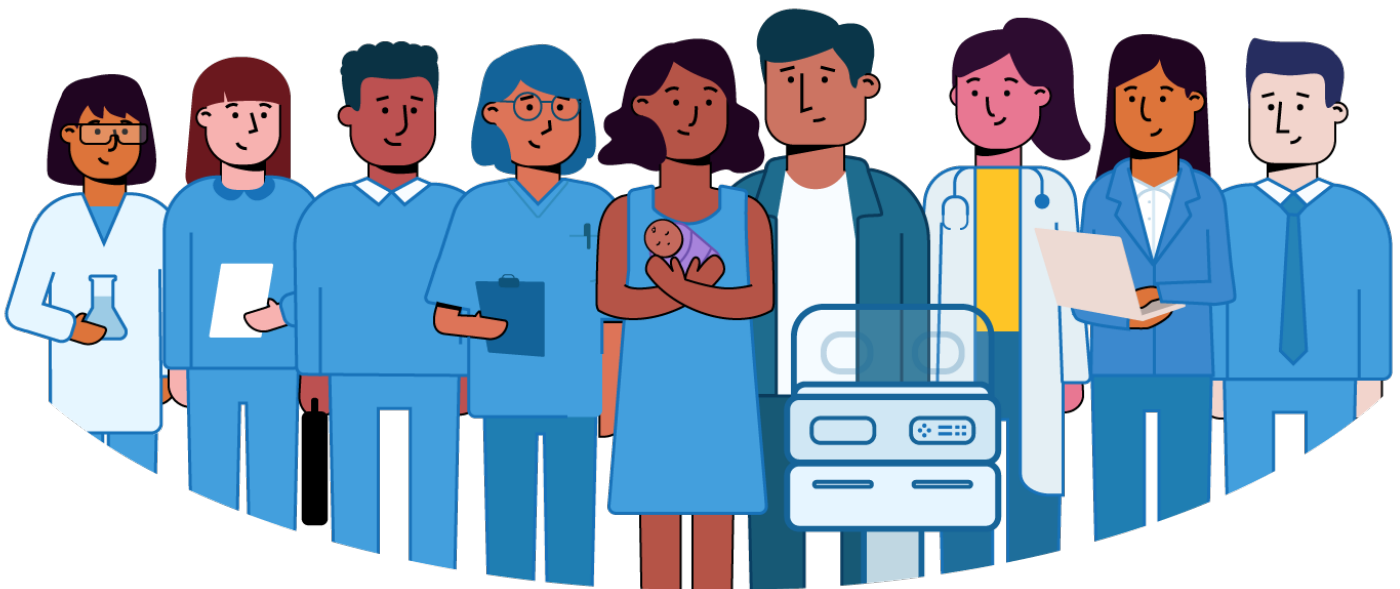
The @CPathInstitute International Neonatal Consortium accelerates the development of safe and effective therapies for premies by engaging the global community and spurring collaboration to address neonatal needs. <https://c-path.org/inc/>

The @CPathInstitute International Neonatal Consortium helps #NICU nurses support long-term follow-up that balances direct and indirect family costs against sponsor benefits. More on how INC spurs collaboration to address neonatal needs: <https://c-path.org/inc/>

Drug effects or interventions in neonatal care may not be evident for many years, which is why there are important benefits to long-term follow-up. More about how @CPathInstitute International Neonatal Consortium helps nurses address neonatal needs: <https://c-path.org/inc/>

I'm proud to be speaking at <event tag> this year and plan to highlight the important role @CPathInstitute International Neonatal Consortium plays in neonatal long-term outcomes. Learn more: <https://c-path.org/inc/>

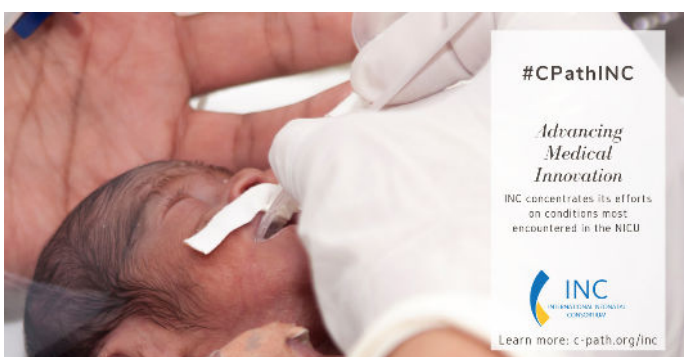
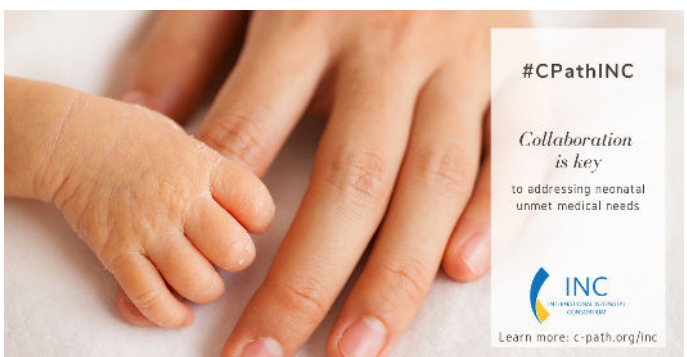
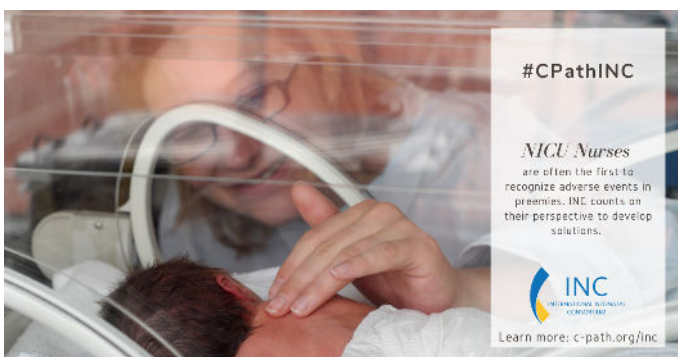
It's National Nurses week and I salute my fellow #NICU Nurses and co-members of the @CPathInstitute International Neonatal Consortium. More on how NICU nurses help accelerate drug development for neonates: <https://c-path.org/inc/>



# #CPath #INC #NAESS #neonatal #neonatology #nicu #nurse #preemie #premature #healthcare #neonatologist #collaboration #pediatric #clinicaltrials #consortium #globalhealth #regulators #industry

## STEP 2

Looking for an image to accompany your post? We've got those too!



CLICK HERE TO DOWNLOAD SOCIAL IMAGES