

 @Critical Path Institute (C-Path)

 @Critical Path Institute

 @CPathInstitute

Help us spread the word!

It's quick and easy!

**Follow the steps below to share
with your network on social media
and extend our reach.**

**STEP
1**

Start with some key messages or share your own:

@CriticalPathInstitute's International Neonatal Consortium accelerates the development of safe and effective therapies for preemies by engaging the global community, including **Parents**. Find out more about how INC spurs collaboration to address neonatal needs: <https://c-path.org/inc/>

Parent participation in clinical care and clinical trial reporting of adverse events increases the overall safety of all infants, including those enrolled in clinical research trials. To find out more about how **@CriticalPathInstitute's** International Neonatal Consortium spurs collaboration to address neonatal needs, go to: <https://c-path.org/inc/>

Involving families in clinical study design helps researchers determine if the study is relevant, acceptable and feasible, which potentially minimizes the risk and burden, while optimizing the benefit of the trial. To find out more about how **@CriticalPathInstitute's** International Neonatal Consortium engages family participation to address neonatal needs, go to: <https://c-path.org/inc/>

Parents of preemies may be surprised to learn very few clinical trials are designed specifically for neonates. **@CriticalPathInstitute's** International Neonatal Consortium is committed to raising the parent voice to better inform trials: Learn more: <https://c-path.org/inc/>

Retaining contact with families throughout clinical studies and during long-term follow-up allows for continued dialogue about the health of their infants over time as well as more formal evaluations of the infants' clinical and neurological status. To find out more about how **@CriticalPathInstitute's** International Neonatal Consortium engages family participation to address neonatal needs, go to: <https://c-path.org/inc/>

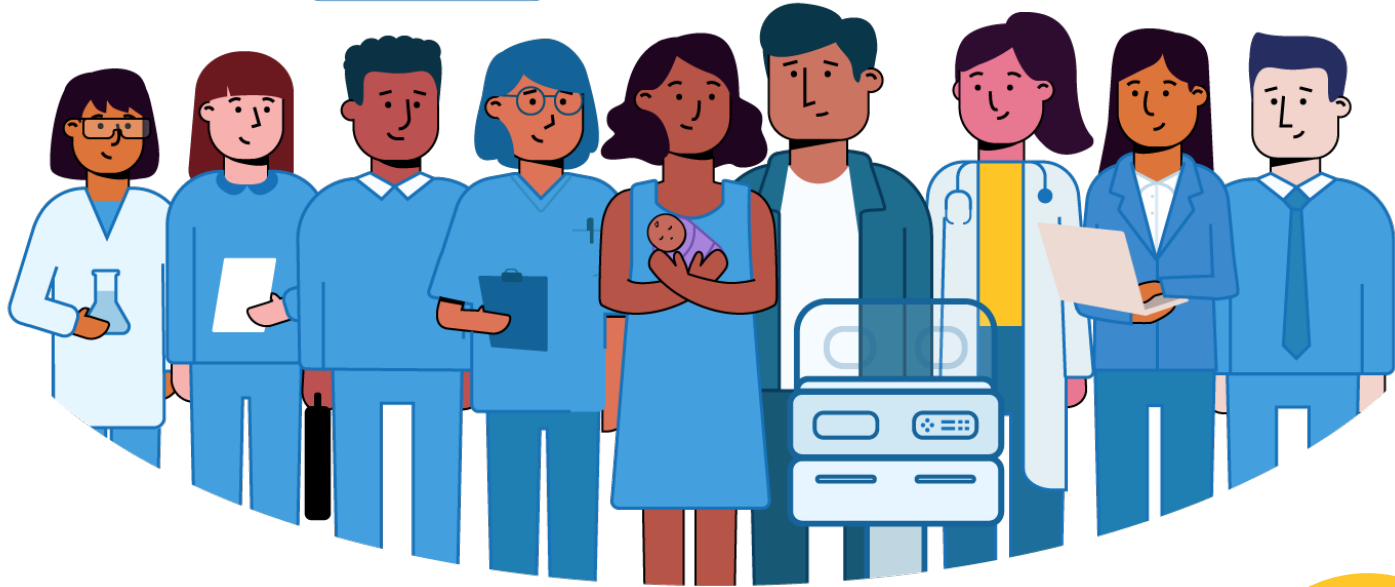
The **@CPathInstitute** International Neonatal Consortium accelerates the development of safe and effective therapies for preemies by engaging the global community and spurring collaboration to address neonatal needs. <https://c-path.org/inc/>

Parent participation in clinical care and clinical trial reporting of adverse events increases safety for all infants, including those enrolled in clinical trials. More on how **@CPathInstitute** International Neonatal Consortium addresses neonatal needs: <https://c-path.org/inc/>

Involving families in clinical study design helps researchers determine if the study is relevant, acceptable and feasible, which can minimize the risk and burden, while optimizing trial benefits. More on #CPath's INC: <https://c-path.org/inc/>

Parents of preemies may be surprised to learn very few clinical trials are designed specifically for neonates. **@CPathInstitute** International Neonatal Consortium is committed to raising the parent voice to better inform trials: More: <https://c-path.org/inc/>

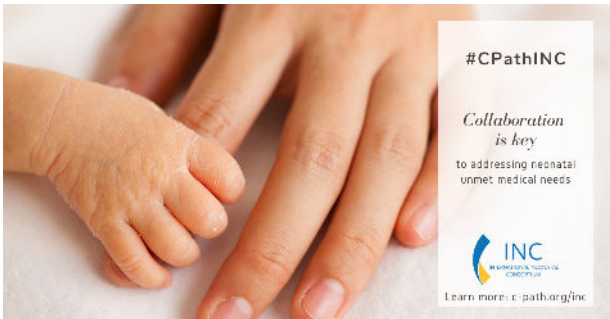
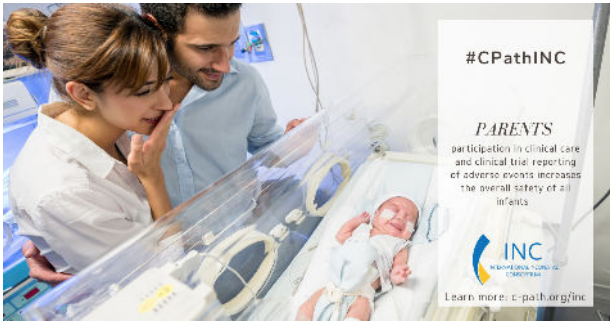
Retaining contact w/families throughout clinical studies and during longterm follow-up allows for continued dialogue about the health of infants over time + formal evaluations of clinical/neurological status. More on how #CPath's INC engages families: <https://c-path.org/inc/>



#CPath #INC #NAESS #neonatal #neonatology #nicu #nurse #preemie #premature #healthcare #neonatologist #collaboration #pediatric #clinicaltrials #consortium #globalhealth #regulators #industry

**STEP
2**

Looking for an image to accompany your post? We've got those too!



CLICK HERE TO DOWNLOAD SOCIAL IMAGES