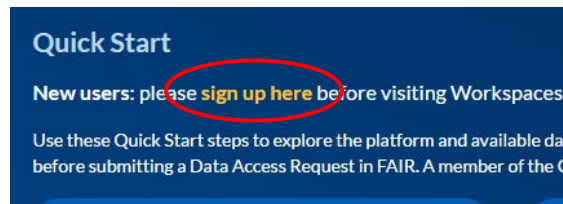


D-RSC Clinical Trial Simulation Tool - ShinyApp

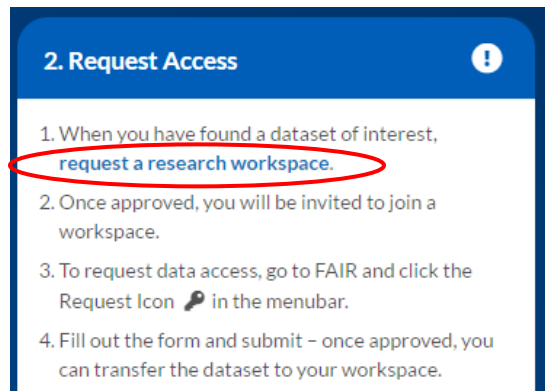
The D-RSC Clinical Trial Simulation Tool ShinyApp is now available through the Rare Disease Cures Accelerator-Data and Analytics Platform (RDCA-DAP). The guide below will assist in requesting the tool for use within a private research workspace.

Establish Platform Access

1. Navigate to the platform portal at portal.rdca.c-path.org. This one-stop starting point allows users to
 - a. Set up a platform account by clicking “sign up here” at the top of the page.



- b. Request a private research workspace environment in which the tool can be used.

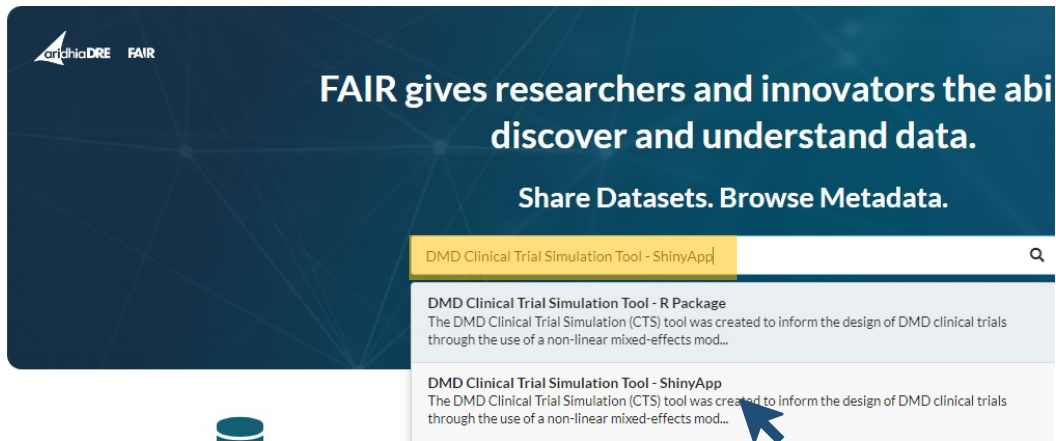


- c. Both of the above requests are delivered to C-Path and notifications are sent when each are completed. (This can take 3-5 business days.)

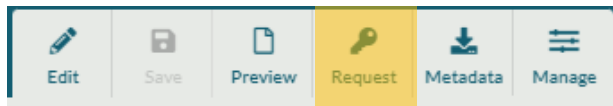
***Please note, the use of an authentication app will be needed to meet two-factor authentication requirements using time-based one-time passwords (TOTP). More information is available in the knowledge base @ [Time-based one-time password support](#).**

Requesting the Tool

1. Once the above requests have been setup, access RDCA-DAP at <https://fair.dap.c-path.org>.
2. Enter “DMD Clinical Trial Simulation Tool - ShinyApp” into the search bar of your Home tab and select it from the returned matches to open the catalog entry for this asset.



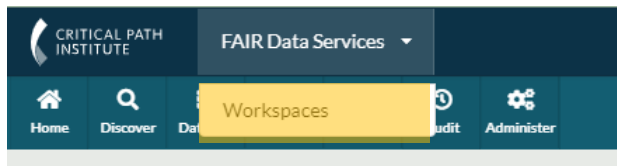
3. Select the Request button from the top of the DMD Clinical Trial Simulation Tool - ShinyApp catalog entry.



4. Complete the resulting request forms and submit for review. Once approved you will be notified that the simulation tool is available for use within your private workspace.

Accessing the Tool in Workspaces

1. After logging into RDCA-DAP, select the Workspace portion of the platform by clicking FAIR Data services to access both options.



2. The workspace requested previously will now be displayed.
3. Once opened, select Apps > View Apps from the top menu to access the D-RSC app. Click the run button to begin.

