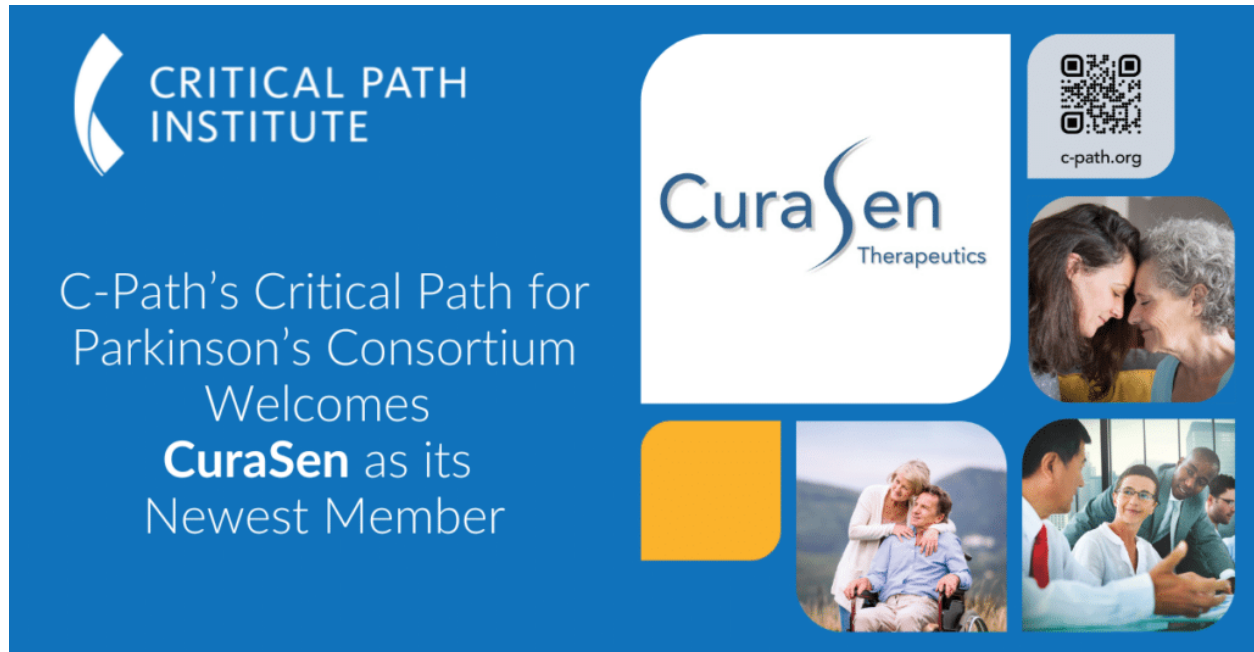


C-Path Welcomes CuraSen As Newest CPP Member



C-Path is thrilled to welcome CuraSen Therapeutics as the newest member of its Critical Path for Parkinson's Consortium. CuraSen is a pioneering biopharmaceutical company dedicated to developing novel treatments for neurodegenerative diseases like Parkinson's and Alzheimer's. Their innovative approach focuses on the adrenergic system, with small molecule drugs that directly target α - and β -adrenoceptors to address cognitive impairment in these disorders. CuraSen's expertise in cognition, emotional processing, and depression rating scales will be invaluable in our shared mission to improve the lives of those affected by Parkinson's.

We look forward to the collaboration and the strides we will make together. For more information on C-Path's efforts in Parkinson's disease, visit: c-path.org/cpp